

## Structures for the Period 2019 – 2023

### International Union of Geodesy and Geophysics (IUGG)

#### Executive Committee

##### Bureau

President:	<i>Kathryn Whaler</i>	UK
President-Elect:	<i>Chris Rizos</i>	Australia
Secretary General:	<i>Alexander Rudloff</i>	Germany
Treasurer:	<i>Niels Andersen</i>	Denmark
Members:	<i>Stephen McNutt</i>	USA
	<i>Eduard Petrovsky</i>	Czech Republic
	<i>Jun Xia</i>	China

**Immediate Past President:** *Michael Sideris* Canada

#### Presidents of the International Associations

IACS:	<i>Regine Hock</i>	USA
IAG:	<i>Zuheir Altamimi</i>	France
IAGA:	<i>Mioara Manda</i>	France
IAHS:	<i>Günter Blöschl</i>	Austria
IAMAS:	<i>Joyce Penner</i>	USA
IAPSO:	<i>Trevor McDougall</i>	Australia
IASPEI:	<i>Kenji Satake</i>	Japan
IAVCEI:	<i>Patrick Allard</i>	France

#### Finance Committee

Chair:	<i>Corina Risso</i>	Argentina
Members:	<i>József Ádám</i>	Hungary
	<i>Priscilla Grew</i>	USA

#### Secretariat of IUGG

The Secretariat of IUGG is located in Germany:  
Helmholtz Centre Potsdam  
GFZ German Research Centre for Geosciences  
Telegrafenberg, A17  
14473 Potsdam, Germany

Executive Secretary: *Franz G. Kuglitsch* Germany  
Assistant: *Katrin Gundrum* Germany

The Executive Secretary of IUGG is a non-voting Member of the Bureau of the Union.

#### International Associations

##### International Association of Cryospheric Sciences

President: *Regine Hock* USA  
President-Elect: *Liss M. Andreassen* Norway  
Secretary General: *Richard Essery* New Zealand

##### International Association of Geodesy

President: *Zuheir Altamimi* France  
Secretary General: *Markku Poutanen* Finland

##### International Association of Geomagnetism and Aeronomy

President: *Mioara Manda* France  
Secretary General: *Monika Korte* Germany

##### International Association of Hydrological Sciences

President: *Günter Blöschl* Austria  
President Elect: *Berit Arheimer* Sweden  
Secretary General: *Christophe Cudennec* France

### International Association of Meteorology and Atmospheric Sciences

President: *Joyce Penner* USA  
 Secretary General: *Steven Ackerman* USA

### International Association for the Physical Sciences of the Oceans

President: *Trevor McDougall* Australia  
 Secretary General: *Stefania Sparnocchia* Italy

### International Association of Seismology and Physics of the Earth's Interior

President: *Kenji Satake* Japan  
 Secretary General: *Johannes Schweitzer* Norway

### International Association of Volcanology and Chemistry of the Earth's Interior

President: *Patrick Allard* France  
 Secretary General: *Roberto Sulpizio* Italy

## Union Commissions and Working Groups

### Union Commission on Climatic and Environmental Changes (CCEC)

Chair: *Jianping Li* China  
 Secretary: *Tonie Van Dam* Luxembourg

### Union Commission on Mathematical Geophysics (CMG)

Chair: *Alik Ismail-Zadeh* Germany/Russia  
 Secretary: *Ilya Zaliapin* USA

### Union Commission on Geophysical Risk and Sustainability (GRC)

Chair: *John LaBrecque* USA  
 Secretary General: *Katia Kontar* USA

### Union Commission on Studies of Earth's Deep Interior (SEDI)

Chair: *Christine Thomas* Germany  
 Secretary: *Michael Bergman* USA

### Union Commission on Planetary Sciences (UCPS)

Chair: *Shuanggen Jin* China  
 Secretary: *Scot Rafkin* USA

### Union Commission on Data and Information (UCDI)

Chair: *Sateesh Shenoi* India  
 Secretary: *Anatoly Soloviev* Russia

# International Association of Geodesy (IAG)

**Markku Poutanen** (Secretary General)

[iag.office@nls.fi](mailto:iag.office@nls.fi)

## Overview

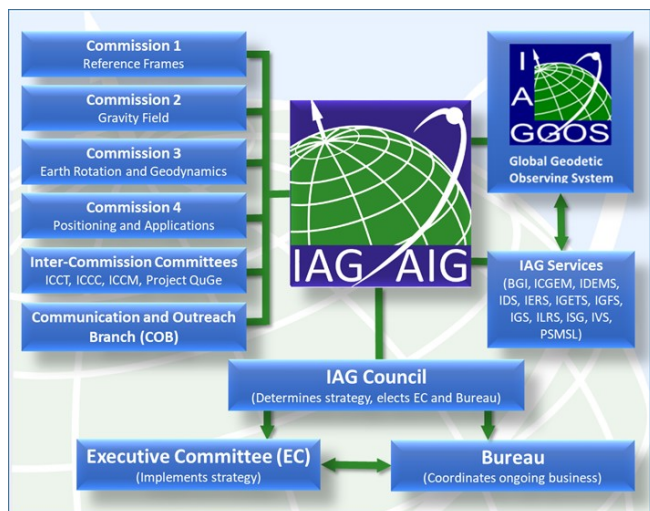
The structure of IAG comprises a number of components: four Commissions, the Inter-Commission Committees on Theory (ICCT), Climate Research (ICCC), and Marine Geodesy (ICCM), Project Novel Sensors and Quantum Technology for Geodesy (QuGe), twelve International Scientific Services, the Global Geodetic Observing System (GGOS), and the Communication and Outreach Branch (COB).

The Commissions are divided into Sub-commissions, Study Groups and Working Groups. The Inter Commission Committees (ICCs) and the Project investigate scientific geodetic-related problems in close cooperation with the Commissions. The Services generate scientific products by means of Operation, Data and Analysis Centres.

The Global Geodetic Observing System GGOS is a component of IAG which works with the IAG Services to provide the geodetic infrastructure necessary for monitoring the Earth system and global change research. GGOS ensures the basis to maintain a stable, accurate and global reference frame, which is crucial for all Earth observation.

The COB provides communication, public information and outreach links, in particular via the IAG Website and the monthly Newsletters.

The IAG General Assembly, the Council, the Executive Committee, and the Office carry out the administration of IAG. The Council is composed by the delegates appointed by the national adhering bodies; the Bureau comprises the IAG President, Vice-President and Secretary General; the Executive Committee consists of 17 elected members; and the Office assists the Secretary General in fulfilling his duties. The COB is responsible for the promotional activities of the IAG and the communication with its members. The detailed programme of the IAG is published in the quadrennial Geodesist's Handbook, and reports are published in the bi-annual IAG Reports (Travaux de l'AIG).



**Figure 1.** Structure of IAG

## IAG Executive Committee

### IAG Bureau

President:	<i>Zuheir Altamimi</i>	France
Vice-President:	<i>Richard Gross</i>	USA
Secretary General:	<i>Markku Poutanen</i>	Finland

### IAG Immediate Past President

President 2015-2019:	<i>Harald Schuh</i>	Germany
----------------------	---------------------	---------

### IAG Immediate Past Secretary General

S.G. 2007-2019:	<i>Hermann Drewes</i>	Germany
-----------------	-----------------------	---------

### IAG Commission Presidents

Commission 1:	<i>Christopher Kotsakis</i>	Greece
Commission 2:	<i>Adrian Jäggi</i>	Switzerland
Commission 3:	<i>Janusz Bogusz</i>	Poland
Commission 4:	<i>Allison Kealy</i>	Australia

**Inter-Commission Committee on Theory (ICCT)**

ICCT President: *Pavel Novák* Czech Republic

**Global Geodetic Observing System (GGOS)**

GGOS Chair: *Basara Miyahara* Japan

**Communication & Outreach Branch (COB)**

COB President: *Szabolcs Rózsa* Hungary

**Representatives of the Services**

Representatives: *Johannes Böhm* Austria  
*Tom Herring* USA  
*Toshimichi Otsubo* Japan

**Members-at-Large**

Members: *Sonia Costa* Brazil  
*Yamin Dang* China

**Non-voting Members**

ICCC: *Annette Eicker* Germany  
 ICCM: *Yuanxi Yang* China  
 QuGe: *Jürgen Müller* Germany  
 IAG Past Presidents: *Helmut Moritz* Austria  
*Ivan I. Mueller* USA  
*Wolfgang Torge* Germany  
*Fernando Sansó* Italy  
*Gerhard Beutler* Switzerland  
*Michael Sideris* Canada  
*Chris Rizos* Australia  
 IAG Past SGs: *Claude Boucher* France

**IAG Office**

Finnish Geospatial Research Institute, National Land Survey of Finland, Masala, Finland

Director: *Markku Poutanen* Finland  
 Treasurer: *Päivi Koponen* Finland

**IAG Communication & Outreach Branch**

Budapest University of Technology and Economics  
 President: *Szabolcs Rózsa* Hungary  
 Newsletter Editor: *Gyula Tóth* Hungary

**Journal of Geodesy**

Editor in Chief: *Jürgen Kusche* Germany

**IAG Symposia Series**

Editor in Chief: *Jeff Freymueller* USA  
 Assistant Editor: *Laura Sánchez* Germany

**IAG Commissions****Commission 1: Reference Frames**

President: *Christopher Kotsakis* Greece  
 Vice-President: *Jean-Paul Boy* France

**Commission 2: Gravity Field**

President: *Adrian Jäggi* Switzerland  
 Vice-President: *Mirko Reguzzoni* Italy

**Commission 3: Earth Rotation and Geodynamics**

President: *Janusz Bogusz* Poland  
 Vice-President: *Cheng-Li Huang* China

**Commission 4: Positioning and Applications**

President: *Allison Kealy* Australia  
 Vice-President: *Vassilis Gikas* Greece

**IAG Inter-Commission Committees****Inter-Commission Committee on Theory (ICCT)**

ICCT President: *Pavel Novák* Czech Republic  
 Vice-President: *Mattia Crespi* Italy

**Inter-Commission Committee for Climate Research (ICCC)**

President: *Annette Eicker* Germany  
 Vice-President: *Carmen Böning* USA

**Inter-Commission Committee on Marine Geodesy (ICCM)**

President: *Yuanxi Yang* China  
 Vice-President: *Heidrun Kopp* Germany

**Project Novel Sensors and Quantum Technology for Geodesy (QuGe)**

President: *Jürgen Müller* Germany  
 Vice-President: *Marcelo Santos* Canada

**IAG Global Geodetic Observing System**

GGOS Chair: *Basara Miyahara* Japan  
 Vice-Chair: *Laura Sanchez* Germany

## IAG Scientific Services

### Bureau Gravimetric International (BGI)

Director: *Sylvain Bonvalot* France

### International Geodynamics and Earth Tide Service (IGETS)

Chair: *Hartmut Wziontek* Germany

Director Central Bureau: *Jean-Paul Boy* France

### International Centre for Global Earth Models (ICGEM)

Director: *Elmas Sinem Ince* Germany

### International Digital Elevation Model Service (IDEMS)

Director: *Kevin M. Kelly* USA

### International DORIS Service (IDS):

Chair Governing Board: *Frank Lemoine* USA

Director Central Bureau: *Laurent Soudarin* France

### International Earth Rotation and Reference Systems Service (IERS)

Chair of Directing Board: *Brian Luzum* USA

Director of Central Bureau: *Daniela Thaller* Germany

### International Service for the Geoid (ISG)

President: *Mirko Reguzzoni* Italy

Director: *Daniela Carrion* Italy

### International Gravity Field Service (IGFS)

Chair: *Riccardo Barzaghi* Italy

Director of Central Bureau: *Georgios Vergos* Greece

### International GNSS Service (IGS)

Chair of Governing Board: *Gary Johnston* Australia

Director of Central Bureau: *Allison Craddock* USA

### International Laser Ranging Service (ILRS)

Chair of Governing Board: *Toshimichi Otsubo* Japan

Director of Central Bureau: *Michael Pearlman* USA

### International Service for Geodesy and Astrometry (IVS)

Chair of Directing Board: *Axel Nothnagel* Austria

Director of Coord. Centre: *Dirk Behrend* USA

### Permanent Service for Mean Sea Level (PSMSL)

Director: *Elizabeth Bradshaw* UK



Fig. 1. First meeting of the IAG Executive Committee in Montreal 2019

## Contact addresses

<b>ALTAMIMI</b> Dr. Zuheir <i>President, IAG</i>	Institut National de l'Information Géographique et Forestière (IGN) Bâtiment Larmarck A 75013 Paris FRANCE	zuheir.altamimi@ign.fr
<b>BARZAGHI</b> Prof. Riccardo <i>Chair, IAG International Gravity Field          Service (IGFS)</i>	Politecnico di Milano DIAR Piazza Leonardo Da Vinci 32 20133 Milan ITALY	riccardo.barzaghi@polimi.it
<b>BEHREND</b> Dr. Dirk <i>Director of Coord. Centre, IAG          International VLBI Service for Geodesy &amp;          Astrometry (IVS)</i>	NVI, Inc. NASA Goddard Space Flight Center Planetary Geodynamics Lab, Code 698 Greenbelt, MD, 20771 USA	dbb@ivscc.gsfc.nasa.gov
<b>BOGUSZ</b> Prof. dr hab. inż. Janusz <i>President, IAG Commission 3: Earth          Rotation and Geodynamics</i>	Military University of Technology (MUT) Faculty of Civil Engineering and Geodesy Gen. S. Kaliskiego, 2 00-908 Warsaw Poland	janusz.bogusz@wat.edu.pl
<b>BÖHM</b> Prof. Dr. Johannes <i>Service Representative, IAG Executive          Committee</i>	Vienna University of Technology Department of Geodesy and Geoinformation Gußhausstraße 27-29 1040 Vienna AUSTRIA	johannes.boehm@geo.tuwien.ac.at
<b>BÖNING</b> Dr. Carmen <i>Vice-President ICCC</i>	Jet Propulsion Laboratory M/S 300-323 4800 Oak Grove Drive Pasadena, CA 91109 USA	carmen.boening@jpl.nasa.gov
<b>BONVALOT</b> Dr. Sylvain <i>Director, IAG Service Bureau          Gravimétrie Internationale (BGI)</i>	Bureau Gravimétrique International Observatoire Midi-Pyrénées 14-16 avenue Edouard Belin 31401 Toulouse Cedex 4 FRANCE	bonvalot@ird.fr
<b>BOY</b> Dr. Jean-Paul <i>Director Central Bureau, IAG          International Geodynamics and Earth Tide          Service (IGETS)</i>	Ecole et Observatoire des Science de la Terre 5 rue René Descartes 67084 Strasbourg FRANCE	jjpboy@eost.u-strasbg.fr
<b>BRADSHAW</b> Dr. Elizabeth <i>Director, IAG Permanent Service for          Mean Sea Level (PSMSL)</i>	National Oceanography Centre Joseph Proudman Building 6 Brownlow Street Liverpool, L3 5DA UK	psmsl@noc.ac.uk
<b>COSTA</b> Dr. Sonia <i>Member-at-Large, IAG Executive          Committee</i>	Instituto Brasileiro de Geografia e Estatística – IBGE Av. Brasil, 15671 Parada de Lucas Rio de Janeiro Brasil	sonia.alves@ibge.gov.br

<b>CRADDOCK</b> Ms Allison <i>Director of Central Bureau, IAG International GNSS Service (IGS)</i>	IGS Central Bureau c/o Jet Propulsion Laboratory Mail Stop 238-600 4800 Oak Grove Drive PASADENA, CA 91109 USA	craddock@jpl.nasa.gov craddock@igs.org
<b>CARRION</b> Prof. Daniela <i>Director, IAG International Service for the Geoid (ISG)</i>	Politecnico di Milano IGeS at DIAR P.za Leonardo da Vinci, 32 20133 Milano ITALY	daniela.carrion@polimi.it
<b>CRESPI</b> Prof. Mattia <i>Vice-President, IAG Inter-Commission Committee on Theory (ICCT)</i>	Università di Roma "La Sapienza" Facolta' di Ingegneria Civile e Industriale Dipartimento di Ingegneria Civile, Edile e Ambientale via Eudossiana, 18 00184 Roma ITALY	mattia.crespi@uniroma1.it
<b>DANG</b> Prof. Dr. Yamin <i>Member at Large, IAG Executive Committee</i>	Institute of Geodesy and Geodynamics Chinese Academy of Surveying & Mapping 28 Lianhuachi Xi RD 100830 Beijing CHINA	dangym2015@163.com
<b>DREWES</b> Prof. Dr. Hermann <i>Immedeate Past Secretary General, IAG</i>	German Geodetic Research Institute , TU München (DGFI-TUM) Arcisstr. 21 80333 Munich GERMANY	h.drewes@tum.de
<b>EICKER</b> Prof. Dr.-Ing. Annette <i>President, IAG Inter-Commission Committee for Climate Research</i>	HafenCity University Hamburg Geodesy and Geoinformatics Überseeallee 16 20457 Hamburg GERMANY	annette.eicker@hcu-hamburg.de
<b>FREYMUELLER</b> Prof. Jeffrey <i>Editor in Chief, IAG Symposia Series</i>	Thomas A. Vogel Endowed Chair for Geology of the Solid Earth Dept. of Earth and Environmental Sciences Michigan State University 288 Farm Lane, Rm 207 East Lansing, MI, 48824 USA	freymuel@msu.edu
<b>GIKAS</b> Prof. Vassilis <i>Vice-President, Commission 4</i>	National Technical University of Athens 9 I. Polytechniou Str. 15780, Zographos, Athens GREECE	vgikas@central.ntua.gr
<b>GROSS</b> Dr. Richard S. <i>Vice-President, IAG</i>	Jet Propulsion Laboratory Mail Stop 238-600 4800 Oak Grove Drive Pasadena, CA, 91109 USA	richard.s.gross@jpl.nasa.gov
<b>HERRING</b> Prof. Thomas <i>Service Representative, IAG Executive Committee</i>	Rm 54-322, Department of Earth, Atmospheric and Planetary Sciences Massachusetts Institute of Technology Cambridge, MA, 02139 USA	tah@mit.edu

<b>HUANG</b> Prof. Cheng-Li Vice-President, IAG Commission 3: Earth Rotation and Geodynamics	Shanghai Astronomical Observatory CAS 80 Nandan Rd Shanghai, 200030 CHINA	clhuang@shao.ac.cn
<b>INCE</b> Dr. Elmas Sinem <i>Director, IAG International Centre for Global Earth Models (ICGEM)</i>	GFZ German Research Centre for Geosciences Telegrafenberg A17 14473 Potsdam GERMANY	elmas.sinem.ince@gfz-potsdam.de
<b>JÄGGI</b> Prof. Dr. Adrian <i>President, IAG Commission 2: Gravity Field</i>	University of Bern Astronomical Institute Sidlerstrasse 5 3012 Bern Switzerland	adrian.jaeggi@aiub.unibe.ch
<b>JOHNSTON</b> Dr. Gary <i>Chair of the Governing Board, IAG International GNSS Service (IGS)</i>	Geoscience Australia Minerals and Natural Hazards Division GPO Box 378 Canberra, ACT, 2601 AUSTRALIA	gary.johnston@ga.gov.au
<b>KEALY</b> Assoc. Prof. Allison <i>President, IAG Commission 4: Positioning and Applications</i>	The University of Melbourne Department of Infrastructure Engineering Victoria, 3010 AUSTRALIA	a.kealy@unimelb.edu.au
<b>KELLY</b> M.A.Sc. Kevin M. <i>Director, IAG International Digital Elevation Model Service (IDEMS)</i>	ESRI, Inc. 380 New York Street Redlands, CA, 92373-8100 USA	kevin_kelly@esri.com
<b>KOPONEN</b> Ms. Päivi <i>Assistant Treasurer</i>	National Land Survey of Finland Box 84 (Opastinsilta 12C) 00521 Helsinki FINLAND	paivi.koponen@maanmittauslaitos.fi
<b>KOPP</b> Prof. Heidrun <i>Vice-President ICCM</i>	Helmholtz Centre for Ocean Research Kiel Wischofstrasse 1-3 Room 8D-227 D-24148 Kiel GERMANY	hkopp@geomar.de
<b>KOTSAKIS</b> Prof. Dr. Christopher <i>President, IAG Commission 1: Reference Frames</i>	AUTH - Faculty of Engineering School of Rural and Surveying Engineering Department of Geodesy and Surveying Univ Box 440, Thessaloniki, 54124, GREECE	kotsaki@topo.auth.gr
<b>KUSCHE</b> Prof. Jürgen <i>Editor in Chief, Journal of Geodesy</i>	University of Bonn Institute for Geodesy and Geoinformation Nussallee 17 53115 Bonn GERMANY	jkusche@geod.uni-bonn.de
<b>LEMOINE</b> PhD Frank <i>Chair of Governing Board, IAG International DORIS Service (IDS)</i>	NASA/GSFC Mail Code: 61A Greenbelt, MD 20771 USA	frank.g.lemoine@nasa.gov



<b>LUZUM</b> Dr. Brian <i>Chair of Directing Board, IAG International Earth Rotation &amp; Reference Systems Service (IERS)</i>	U.S. Naval Observatory Earth Orientation Department 3450 Massachusetts Ave NW Washington, DC, 20392 5420 USA	brian.luzum@usno.navy.mil
<b>MIYAHARA</b> Mr. Basara <i>Chair of the Global Geodetic Observing System (GGOS)</i>	Geospatial Information Authority of Japan Ministry of Land, Infrastructure, Transport and Tourism, Tsukuba JAPAN	miyahara-b96ip@mlit.go.jp
<b>MÜLLER</b> Prof. Dr.-Ing. habil. Jürgen <i>President, IAG Project Novel Sensors and Quantum Technology for Geodesy</i>	Leibniz University Hannover Institute of Geodesy Schneiderberg 50 30167 Hannover GERMANY	mueller@ife.uni-hannover.de
<b>NOTHNAGEL</b> Dr. Axel <i>Chair of Directing Board of IAG International Service for Geodesy and Astrometry (IVS)</i>	Technische Universität Wien Forschungsbereich Höhere Geodäsie Wiedner Hauptstraße 8 A-1040 Wien AUSTRIA	axel.nothnagel@tuwien.ac.at
<b>NOVAK</b> Prof. Dr. Pavel <i>President, IAG Inter-Commission Committee on Theory (ICCT)</i>	University of West Bohemia Faculty of Applied Sciences Univerzitni 22 306 14 Pilsen CZECH REPUBLIC	panovak@kma.zcu.cz
<b>OTSUBO</b> Prof. Toshimichi <i>Service Representative, IAG Executive Committee</i>	Hitotsubashi University East Bldg, 2-1 Naka, Kunitachi 186-8601 JAPAN	t.otsubo@r.hit-u.ac.jp
<b>PEARLMAN</b> Dr. Michael R. <i>Director of Central Bureau, IAG International Laser Ranging Service (ILRS)</i>	Harvard-Smithsonian Center for Astrophysics 60 Garden Street Cambridge, MA, 02138 USA	mpearlman@cfa.harvard.edu
<b>POUTANEN</b> Prof. Markku <i>Secretary General, IAG</i>	Finnish Geospatial Research Institute FGI National Land Survey of Finland Geodeetinrinne 2 02430 Masala FINLAND	markku.poutanen@nls.fi iag.office@nls.fi
<b>REGUZZONI</b> Dr. Mirko <i>President, IAG International Service for the Geoid (ISG)</i>	Politecnico di Milano IGeS at DIIAR P.za Leonardo da Vinci, 32 20133 Milano ITALY	mirko.reguzzoni@polimi.it
<b>ROZSA</b> Dr. Szabolcs <i>President, IAG Communication &amp; Outreach Branch</i>	University of Technology and Economics P.O. Box 91 1521 Budapest HUNGARY	szroza@iag-aig.org
<b>SANCHEZ</b> Dr. Laura <i>Vice-Chair GGOS Assistant Editor, IAG Symposia Series</i>	German Geodetic Research Institute TU München (DGFI-TUM) Alfons-Goppel-Str. 11 80539 Munich GERMANY	lm.sanchez@tum.de

<b>SANTOS</b> Prof. Marcelo <i>Vice-President, Project QuGe</i>	University of New Brunswick Dept. Geodesy and Geomatics Eng. P.O. Box 4400 Fredericton, NB, E3B 5A3 CANADA	msantos@unb.ca
<b>SCHUH</b> Prof. Dr. Harald <i>Immediate Past President, IAG</i>	GFZ German Research Centre for Geosciences Telegrafenberg A17 14473 Potsdam GERMANY	schuh@gfz-potsdam.de
<b>SOUDARIN</b> Dr. Laurent <i>Director, Central Bureau of IAG          International DORIS Service (IDS)</i>	CLS 8-10 rue Hermes Parc Technologique du Canal 31520 Ramonville Saint-Agne FRANCE	Laurent.Soudarin@cls.fr
<b>THALLER</b> Dr. Daniela <i>Director of Central Bureau, IAG          International Earth Rotation &amp; Reference          Systems Service (IERS)</i>	Federal Agency for Cartography and Geodesy (BKG) Richard-Strauss-Allee 11 60598 Frankfurt GERMANY	daniela.thaller@bkg.bund.de
<b>VERGOS</b> Prof. Dr. Georgios <i>Director of Central Bureau,          IAG International Gravity Field Service          (IGFS)</i>	Department of Geodesy and Surveying Aristotle University of Thessaloniki University Box 440 54124 Thessaloniki GREECE	vergos@topo.auth.gr
<b>WZIONTEK</b> Dr. Hartmut <i>Chair, IAG International Geodynamics          and Earth Tide Service (IGETS)</i>	BKG Federal Agency for Cartography and Geodesy Branch Office Leipzig Karl-Rothe-Straße 10-14 04105 Leipzig GERMANY	hartmut.wziontek@bkg.bund.de
<b>YANG</b> Prof. Yuanxi <i>President, IAG Inter-Commission          Committee for Marine Geodesy</i>	Chinese Academy of Sciences Xian Research Institute of Surveying and Mapping, and China National Administration of GNSS and Applications (CNAGA), CHINA	yuanxi_yang@163.com